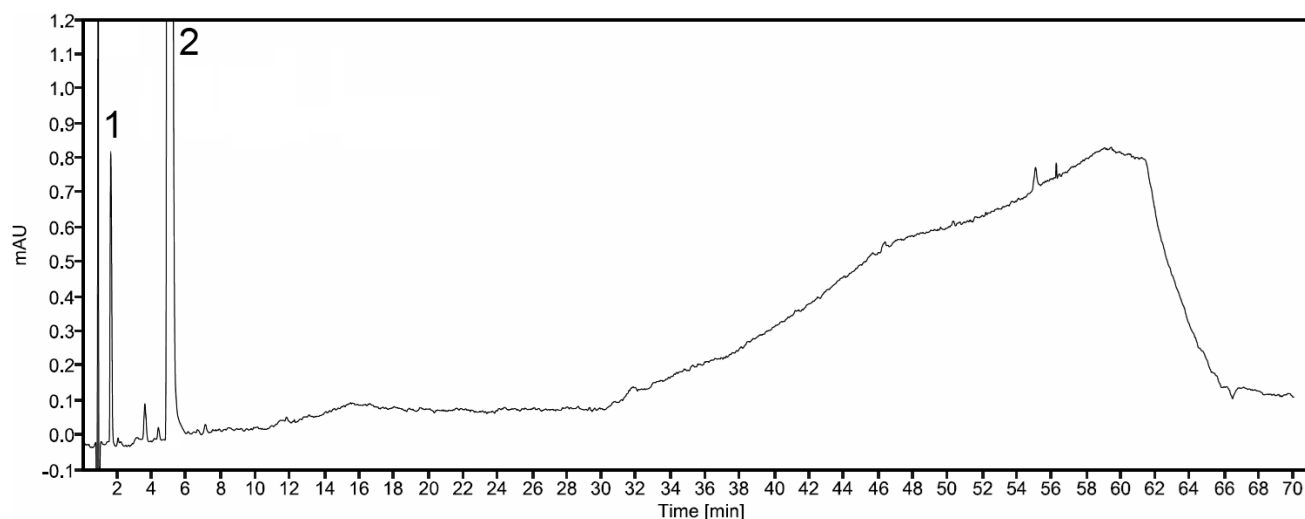




## Paracetamol Suppositories – BP 2025

These chromatograms are provided for information only as an aid to analysts and are intended as guidance for the interpretation and application of BP monographs.

Typical chromatogram for solution (5) from the Related Substances test for Paracetamol Suppositories as published in BP 2025.

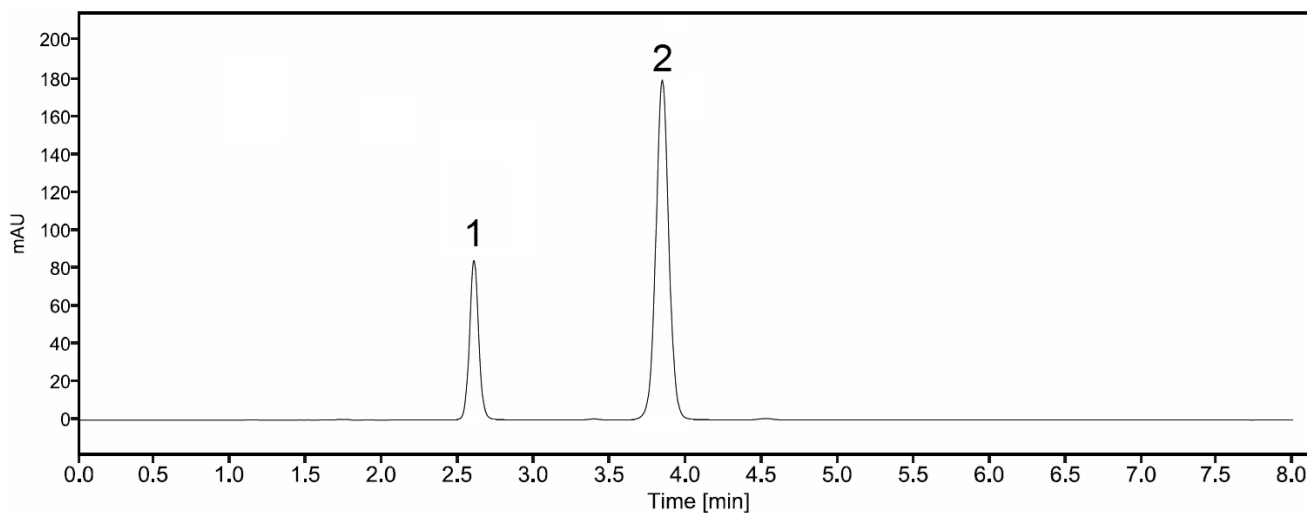


Peak ID: 1: Impurity K. 2: Paracetamol.

<b>Column</b>	Halo C18 (150 mm x 4.6 mm, 5 µm)
<b>Method Ref.</b>	Related Substances for the Paracetamol Suppositories monograph from BP 2025
<b>Mobile Phase A</b>	1.7 g/L potassium dihydrogen phosphate and 1.8 g/L dipotassium hydrogen phosphate
<b>Mobile Phase B</b>	Methanol
<b>Diluent</b>	15% Methanol
<b>Flow rate</b>	Refer to gradient table below
<b>Column Temp</b>	30°C
<b>Injection Volume</b>	50 µL

<b>Detection</b>	254 nm			
<b>Gradient</b>				
<b>Time (minutes)</b>	<b>Mobile phase A (% v/v)</b>	<b>Mobile phase B (% v/v)</b>	<b>Flow rate (mL/min)</b>	<b>Comment</b>
0 – 1.5	95	5	1.5	isocratic
1.5 – 14.4	95 → 90	5 → 10	1.5	linear gradient
14.4 – 28.8	90	10	1.5	isocratic
28.8 – 57.6	90 → 66	10 → 34	1.5	linear gradient
57.6 – 60	66	34	1.5	isocratic
60 – 65	66 → 95	34 → 5	1.5	linear gradient
65 – 70	95	5	1.5	re-equilibration

Typical chromatogram for solution (3) from the Assay test for Paracetamol Suppositories as published in BP 2025.



Peak ID: 1: Impurity K. 2: Paracetamol.

<b>Column</b>	Agilent Zorbax Rx C8 (250 mm x 4.6 mm, 5 µm)
<b>Method Ref.</b>	Assay for the Paracetamol Suppositories monograph from BP 2025
<b>Mobile Phase</b>	250 volumes of methanol containing 1.15 g of a 40% w/v solution of tetrabutylammonium hydroxide, 375 volumes of 0.05M disodium hydrogen orthophosphate and 375 volumes of 0.05M sodium dihydrogen orthophosphate
<b>Diluent</b>	Mobile phase
<b>Flow rate</b>	1.5 mL
<b>Column Temp</b>	35°C
<b>Injection Volume</b>	20 µL
<b>Detection</b>	245 nm